

Figure S1. Scatter plot to visualize causal effect of genetically predicted three subtypes of mood disorders on the risk of preeclampsia from two databases. The slope of each line corresponds to the casual effect estimate using different MR. a, exposure is bipolar disorder, outcome is PE from FinnGen; b, exposure is depression, outcome is PE from FinnGen; c, exposure is manic/hyper symptoms, outcome is PE from FinnGen; d, exposure is bipolar disorder, outcome is PE from IEU; e, exposure is depression, outcome is PE from IEU; f, exposure is manic/hyper symptoms, outcome is PE from IEU. Abbreviations: PE, preeclampsia-eclampsia; FinnGen, FinnGen Consortium; IEU, IEU open GWAS project; MR, mendelian randomization; SNP, single-nucleotide polymorphism.

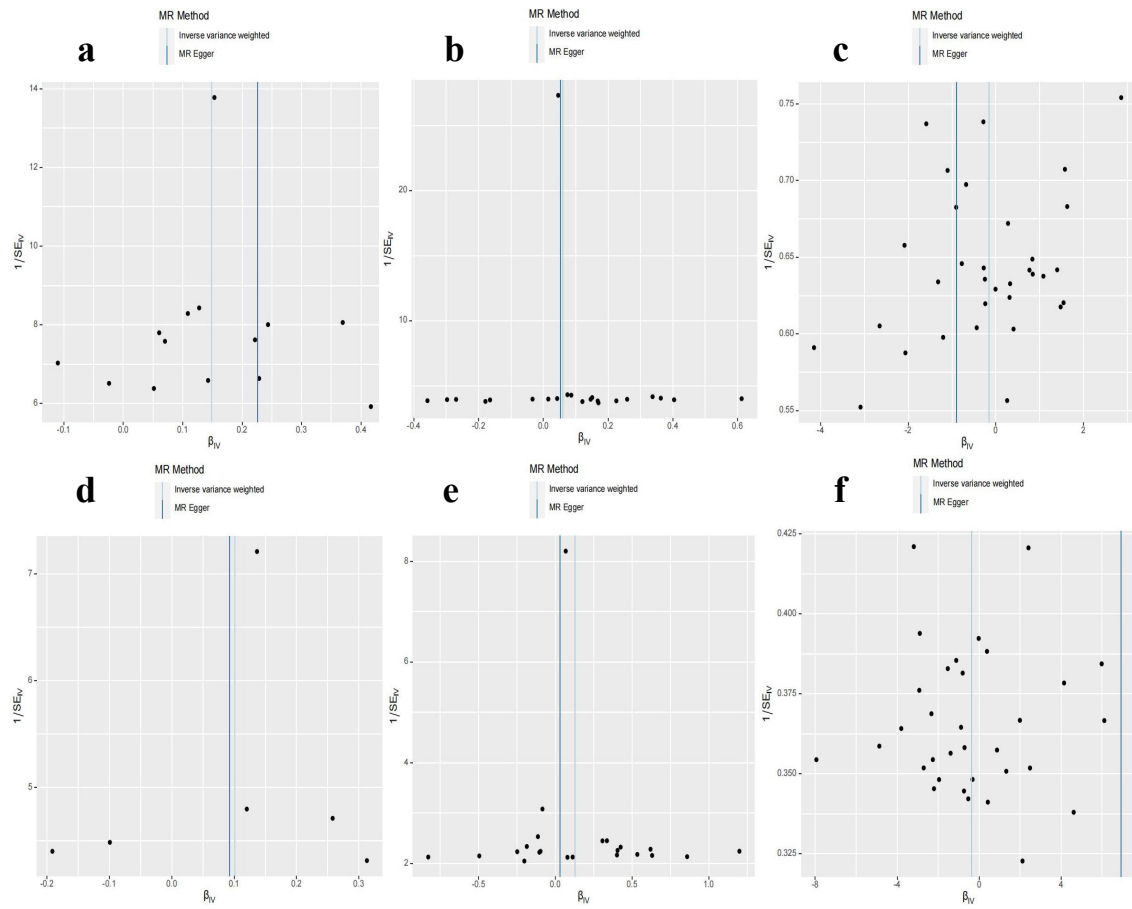


Figure S2. Funnel plots to visualize overall heterogeneity of mendelian randomization estimates for the effect for genetically predicted three subtypes of mood disorders on the risk of preeclampsia from two databases. a, exposure is PE from FinnGen, outcome is bipolar disorder; b, exposure is PE from FinnGen, outcome is depression; c, exposure is PE from FinnGen, outcome is manic/hyper symptoms; d, exposure is PE from IEU, outcome is bipolar disorder; e, exposure is PE from IEU, outcome is depression; f, exposure is PE from IEU, outcome is manic/hyper symptoms. Abbreviations: PE, preeclampsia-eclampsia; FinnGen, FinnGen Consortium; IEU, IEU open GWAS project; MR, mendelian randomization.

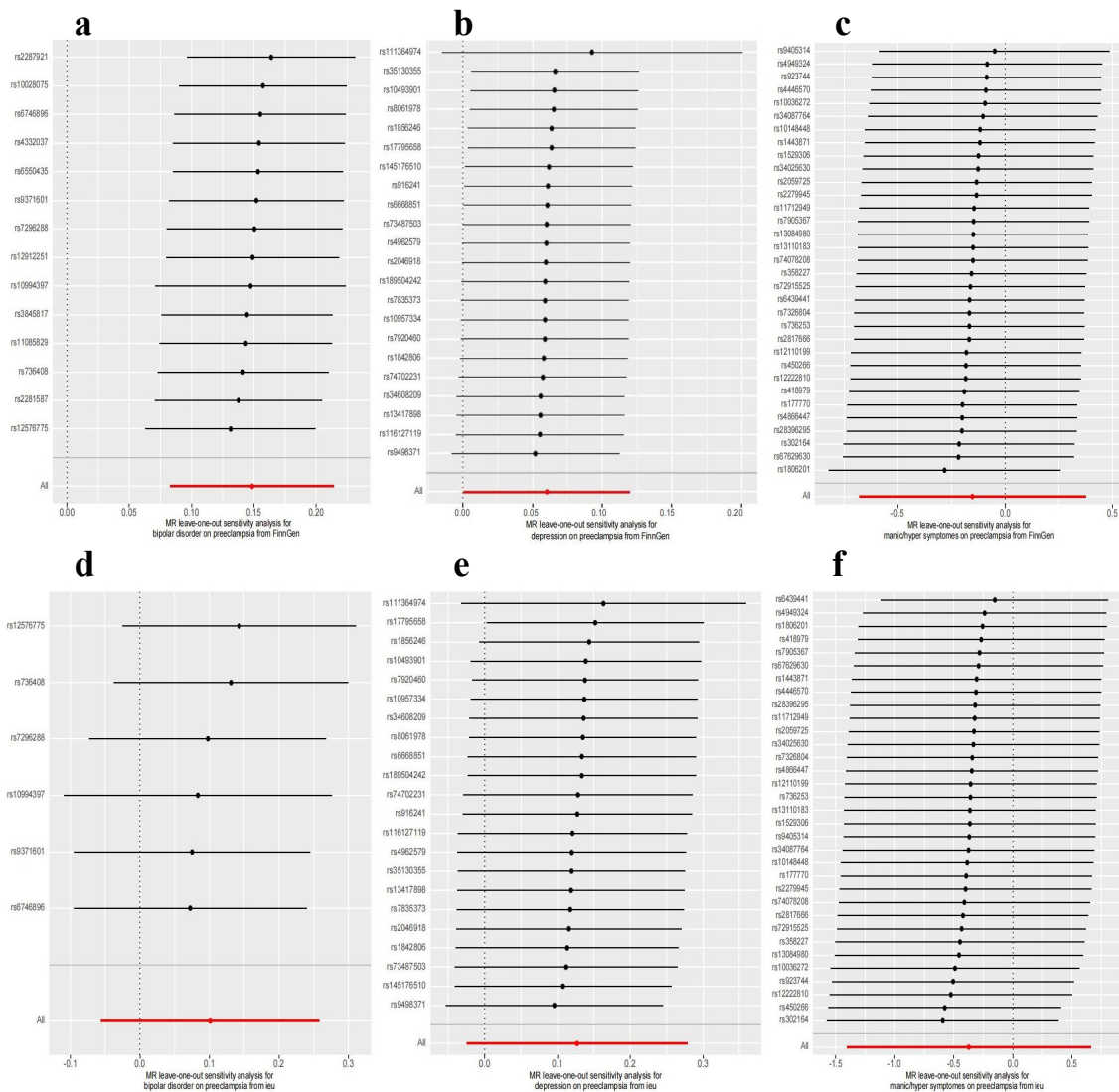


Figure S3. Leave-one-out plot to visualize casual effect of genetically predicted three subtypes of mood disorders on the risk of preeclampsia from two databases when leaving one single-nucleotide polymorphism out. a, exposure is bipolar disorder, outcome is PE from FinnGen; b, exposure is depression, outcome is PE from FinnGen; c, exposure is manic/hyper symptoms, outcome is PE from FinnGen; d, exposure is bipolar disorder, outcome is PE from IEU; e, exposure is depression, outcome is PE from IEU; f, exposure is manic/hyper symptoms, outcome is PE from IEU. Abbreviations: PE, preeclampsia-eclampsia; FinnGen, FinnGen Consortium; IEU, IEU open GWAS project; MR, mendelian randomization.

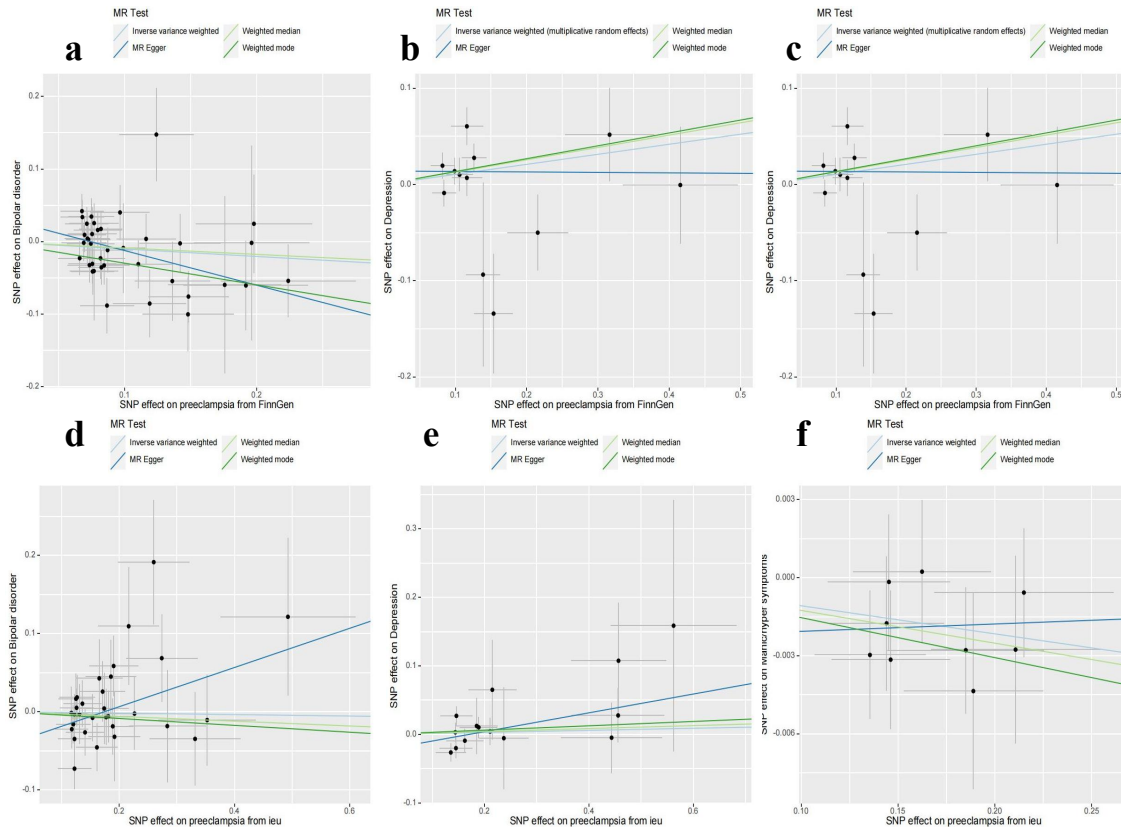


Figure S4. Scatter plot to visualize causal effect of genetically predicted preeclampsia from two databases on the risk of three subtypes of mood disorders. The slope of each line corresponds to the casual effect estimate using different MR. a, exposure is PE from FinnGen, outcome is bipolar disorder; b, exposure is PE from FinnGen, outcome is depression; c, exposure is PE from FinnGen, outcome is manic/hyper symptoms; d, exposure is PE from IEU, outcome is bipolar disorder; e, exposure is PE from IEU, outcome is depression; f, exposure is PE from IEU, outcome is manic/hyper symptoms. Abbreviations: PE, preeclampsia-eclampsia; FinnGen, FinnGen Consortium; IEU, IEU open GWAS project; MR, mendelian randomization; SNP, single-nucleotide polymorphism.

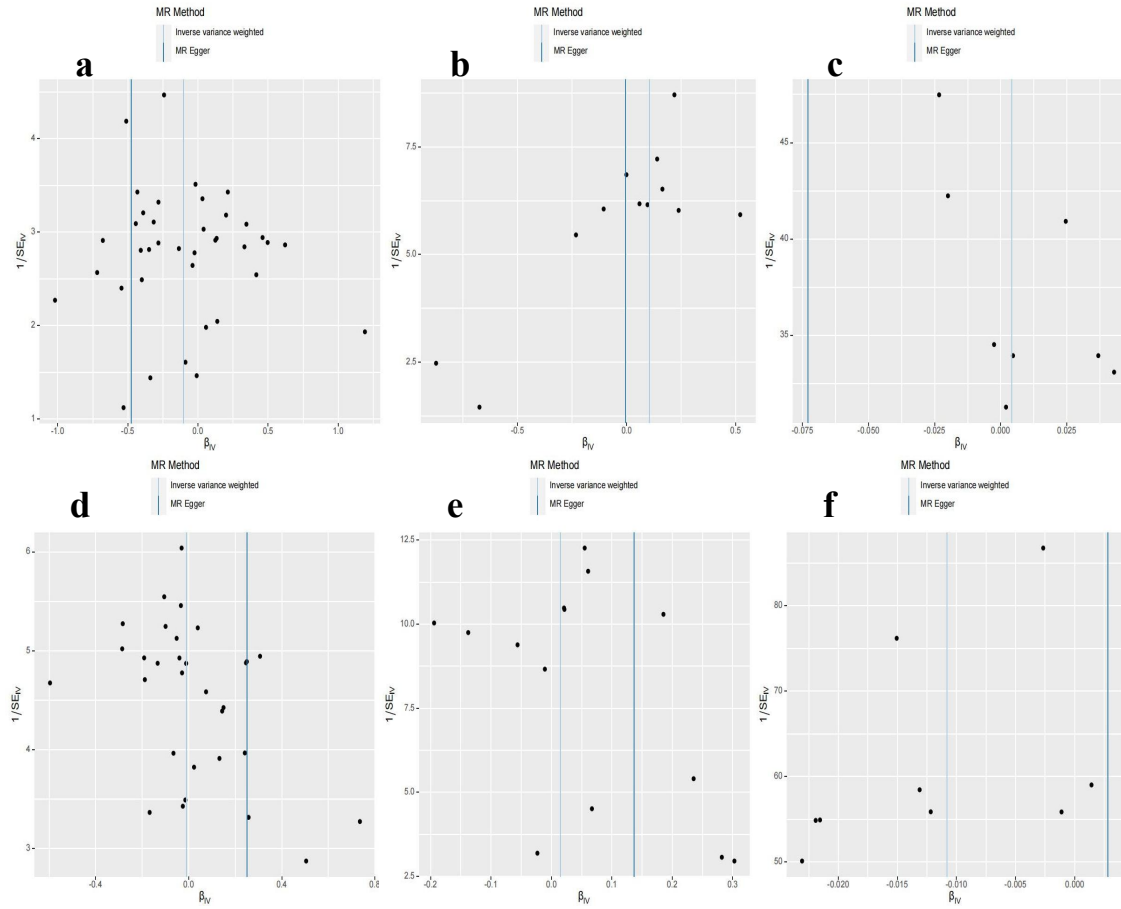


Figure S5. Funnel plots to visualize overall heterogeneity of mendelian randomization estimates for the effect for genetically predicted preeclampsia from two databases on the risk of three subtypes of mood disorders. a, exposure is PE from FinnGen, outcome is bipolar disorder; b, exposure is PE from FinnGen, outcome is depression; c, exposure is PE from FinnGen, outcome is manic/hyper symptoms; d, exposure is PE from IEU, outcome is bipolar disorder; e, exposure is PE from IEU, outcome is depression; f, exposure is PE from IEU, outcome is manic/hyper symptoms. Abbreviations: PE, preeclampsia-eclampsia; FinnGen, FinnGen Consortium; IEU, IEU open GWAS project; MR, mendelian randomization.

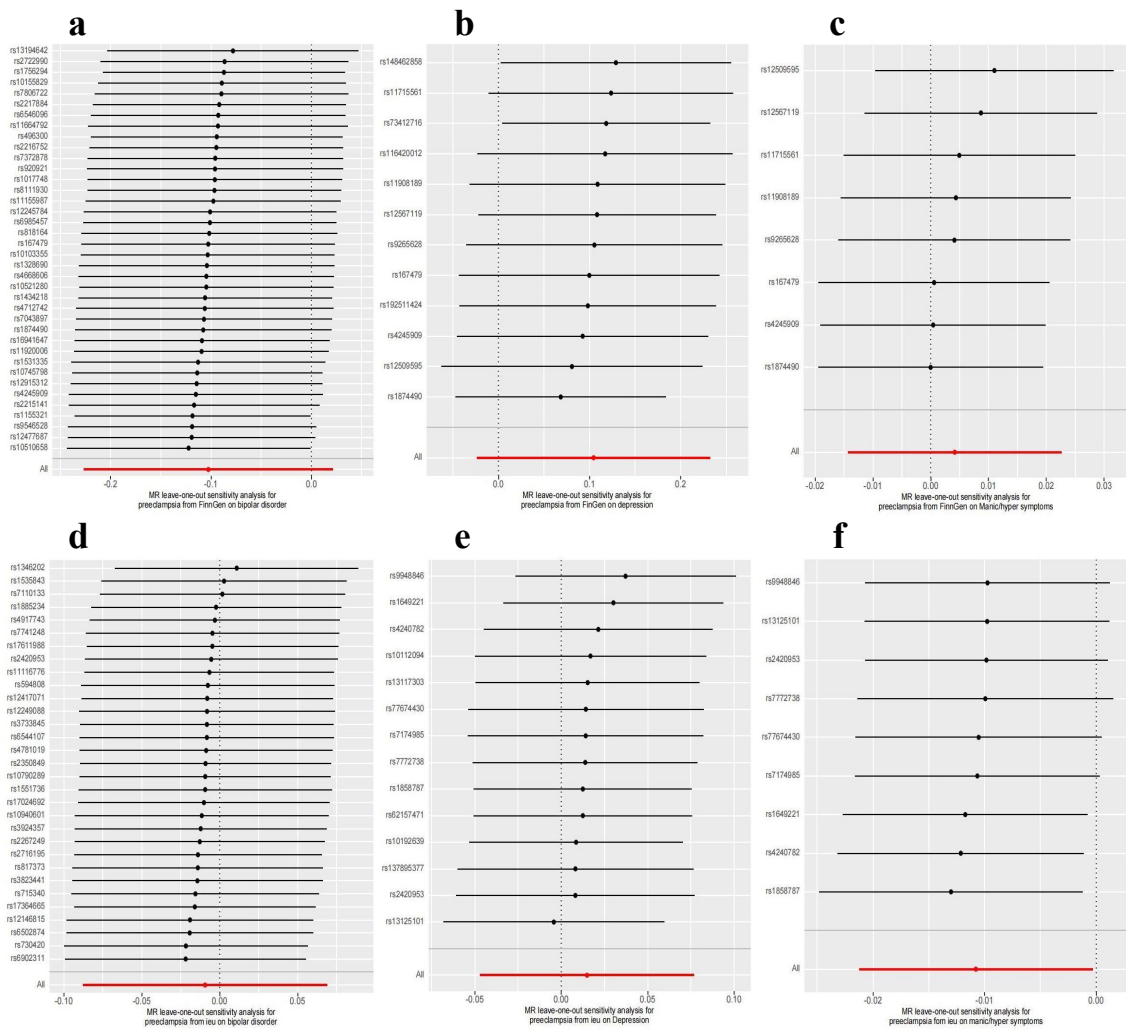


Figure S6. Leave-one-out plot to visualize casual effect of genetically predicted preeclampsia from two databases on the risk of three subtypes of mood disorders when leaving one single-nucleotide polymorphism out. a, exposure is PE from FinnGen, outcome is bipolar disorder; b, exposure is PE from FinnGen, outcome is depression; c, exposure is PE from FinnGen, outcome is manic/hyper symptoms; d, exposure is PE from IEU, outcome is bipolar disorder; e, exposure is PE from IEU, outcome is depression; f, exposure is PE from IEU, outcome is manic/hyper symptoms. Abbreviations: PE, preeclampsia-eclampsia; FinnGen, FinnGen Consortium; IEU, IEU open GWAS project; MR, mendelian randomization.